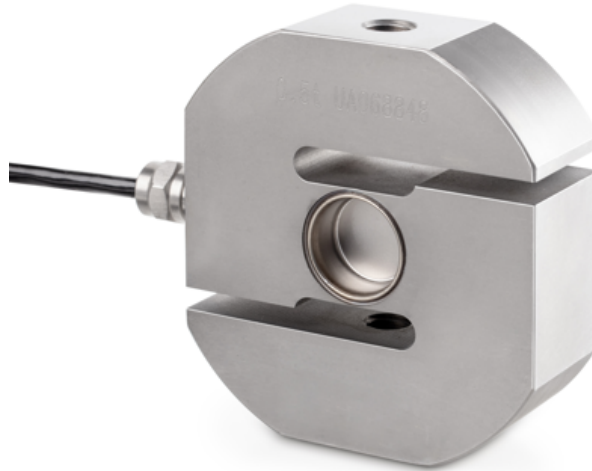


KERN CS 5000-3P2

"S"-Load/force measuring cell made from stainless steel



Article codes, product groups & Status information

Model article-code	CS 5000-3P2
Model-Serie	CS P2
Assortment	Sauter
Product Type	Measuring cells
Product group	S-shape load cells
Product usage type	Main item;Accessories/Services
EAN code (Model)	4045761232150
Planned start date	2020-1HJ
Customs tariff number	84239010
Discontinued model	Yes

Technical data - Primary

Force directions	Compression;tension
OIML class	C3
Weighing capacity	5000 kg
Max (N)	50 kN

Technical data - Construction

IP Protection	IP68
Material	Stainless steel
Dimensions	92×86×50 mm
cable length	6 m
Mounting force in	Threaded hole M24 × 2
Mounting force out	Threaded hole M24 × 2

Technical data - Measuring system

Functions

Standard

Full scale output	2 mV/V
combined error	0,023%
load cell connection	4-guide
measuring applications	Force;mass

Technical data - Environmental conditions

Usage Temperature (min)	-10 °C
Usage temperature (max)	40 °C

Technical data - Packing & Shipping

Dimensions packaging (W×D×H)	215×220×150 mm
Gross weight	3 kg
Net weight	2.4 kg
Shipping method	Parcel service
Packaging component - by weight - paper	560 g
Packaging component - by weight - cardboard	589 g
Packaging component - by weight - metal	29 g
Delivery time	1 d

Technical data - Verification

Verification approval conforming to 2014/31/EU	Yes
Resolution loadcell (e)	3000 e

KERN CS 5000-3P2

"S"-Load/force measuring cell made from stainless steel



Option

