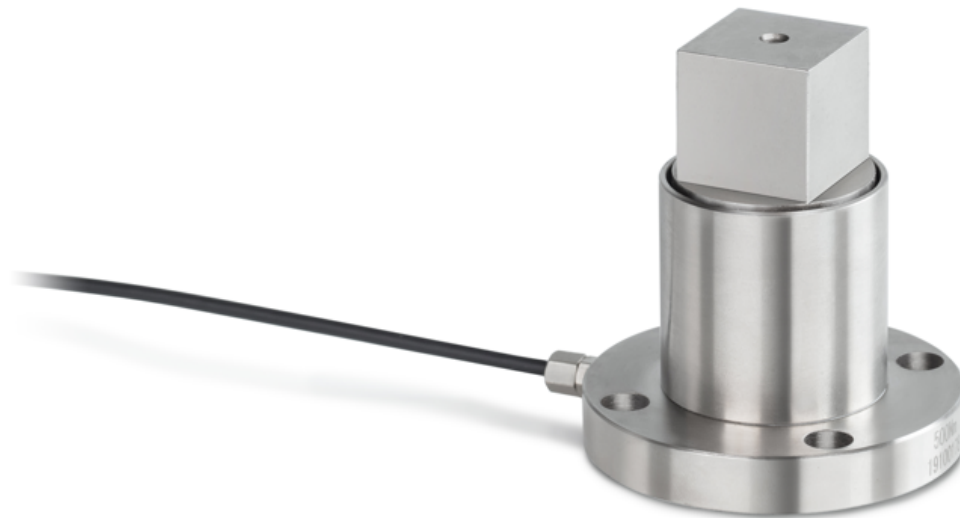


KERN DC 200-Y1

Static torque sensor made from alloy steel

KERN[®]



Article codes, product groups & Status information

Model article-code	DC 200-Y1
Model-Serie	DC Y1
Assortment	Sauter
Product Type	Measuring cells
Product group	Static torque measuring cells
Product usage type	Main item;Accessories/Services
EAN code (Model)	4045761248168
Planned start date	2021-1HJ
Customs tariff number	84239010

Technical data - Construction

Material	Steel
cable length	2 m

Technical data - Power supply

Excitation Voltage min.	9 V
Excitation Voltage max.	12 V

Technical data - Measuring system

Full scale output	1,5 mV/V
combined error	0,5%
load cell connection	4-guide
Measuring applications	Static torque

Technical data - Environmental conditions

Usage Temperature (min)	-20 °C
-------------------------	--------

Functions

Usage temperature (max) 65 °C

Technical data - Packing & Shipping

Dimensions packaging (W×D×H)	120×90×85 mm
Gross weight	0.45 kg
Net weight	0.40 kg
Shipping method	Parcel service
Packaging component - by weight - cardboard	33 g
Packaging component - by weight - plastics	2 g
Packaging component - by weight - foam	6 g
Delivery time	1 d

Technical data - Verification

Verification approval conforming to 2014/31/EU	Yes
--	-----

KERN DC 200-Y1

Static torque sensor made from alloy steel



Standard

