

PRODUCT BROCHURE

KERN SET-37

Date: 19.04.2025

ENGLISH

Software EasyTouch

SET-37

**Export
Manager**

EasyTouch Export Manager – export results data automatically and reliably from EasyTouch – e.g. to import into your ERP system

CONTACT

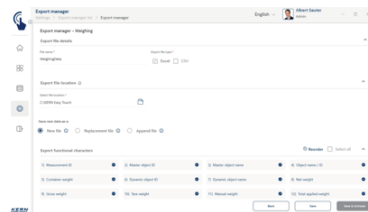
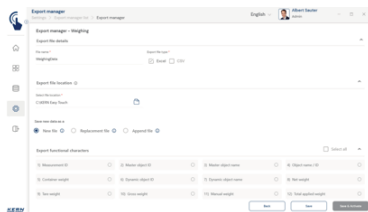
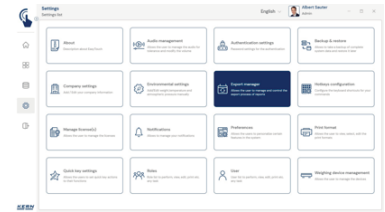
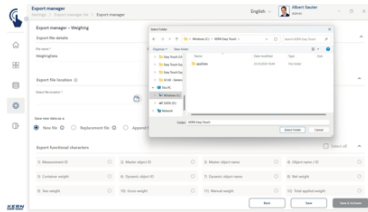
KERN & SOHN GmbH
Ziegelei 1
72336 Balingen
Germany

Phone : +49 7433 9933-0
Fax : +49 7433 9933-149
Email : info@kern-sohn.com
Web : www.kern-sohn.com



Scan here for more
information

PRODUCT SHOWCASE



DESCRIPTION

- Note: Prerequisite for this set is the basic program SET-01 Base
- Data export: Export Manager offers automatic data export at a time interval which can be selected individually. When doing this, different file formats such as CDV or XLSX are supported, in order to enable seamless further processing of data, for example in ERP and PPS systems.
- Data storage location: The storage location for exported files can be freely defined
- Data fields: Depending on the EasyTouch function selected, the data fields to be exported can be freely defined.
- Export intervals: Times and intervals for exports can be set to suit, e.g. once or several times a day, weekly, monthly and annually at defined times
- Export history: Using Export log history you can access all previously exported files
- SaveServer: Use this function to export data from the central SaveServer
- Export file variants: You can choose between different export options:
 - a. Export to a new file
 - b. Export to an existing file

SPECIFICATIONS

Article codes, product groups & Status information

Model article-code	SET-37
Model-Serie	ETS
Assortment	KERN
Product Type	Software
Product group	EasyTouch
Product usage type	Main item;Accessories/Services
EAN code (Model)	404576 1476523
Customs tariff number	852349 10

Technical data - Packing & Shipping

Delivery time	1 d
---------------	-----

FUNCTIONS

Standard



Option

