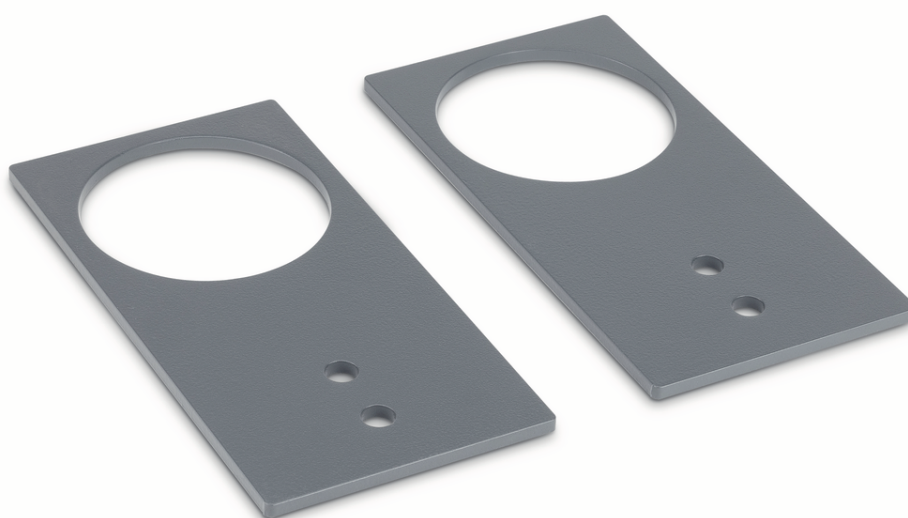


PRODUCT BROCHURE

KERN BFS-A10

Date: 18.04.2025

ENGLISH



Pair of base plates to fix the weighing bridge to the floor

CONTACT

KERN & SOHN GmbH
Ziegelei 1
72336 Balingen
Germany

Phone : +49 7433 9933-0
Fax : +49 7433 9933-149
Email : info@kern-sohn.com
Web : www.kern-sohn.com



Scan here for more
information

DESCRIPTION

Pair of base plates BFS-A10

SPECIFICATIONS

Article codes, product groups & Status information

Model article-code	BFS-A10
Model-Serie	BFS
Assortment	KERN
Product Type	Industrial scales
Product group	Floor scales
Product usage type	Accessories/DL
EAN code (Model)	404576 1153684
Customs tariff number	84239010

Technical data - Primary

Net weight	1.329 kg
------------	----------

Technical data - Construction

Material weighing plate	steel, lacquered
-------------------------	------------------

Technical data - Packing & Shipping

Dimensions packaging (W×D×H)	305×127×80 mm
Gross weight	1.4 kg
Net weight	1.4 kg
Shipping method	Parcel service
Packaging component - by weight - paper	100 g
Packaging component - by weight - cardboard	34.5 g

Packaging component - by weight - plastics	34.5 g
--	--------

Packaging component - by weight - styrofoam	0 g
---	-----

Packaging component - by weight - glass	0 g
---	-----

Packaging component - by weight - wood	0 g
--	-----

Packaging component - by weight - foam	0 g
--	-----

Packaging component - by weight - metal	0 g
---	-----

Delivery time	1 d
---------------	-----

FUNCTIONS

Standard

