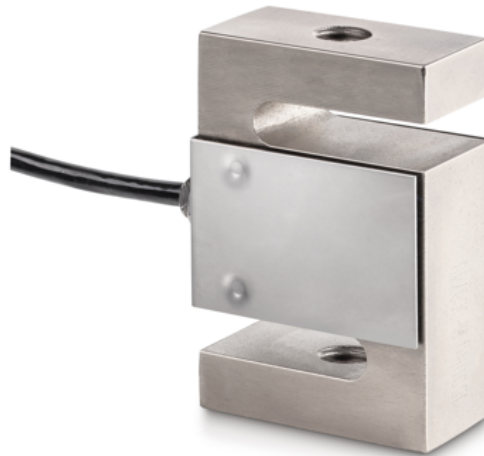


KERN CS 750-3P1

4-wire "S" measuring cell made of nickel-plated steel for force and mass measurement



Article codes, product groups & Status information

| | |
|-----------------------|--------------------------------|
| Model article-code | CS 750-3P1 |
| Model-Serie | CS P1 |
| Assortment | Sauter |
| Product Type | Measuring cells |
| Product group | S-shape load cells |
| Product usage type | Main item;Accessories/Services |
| EAN code (Model) | 4045761221581 |
| Planned start date | 2019-1HJ |
| Customs tariff number | 90249000 |

Technical data - Primary

| | |
|-------------------|---------------------|
| Force directions | Compression;tension |
| OIML class | C3 |
| Weighing capacity | 750 kg |
| Max (N) | 7,5 kN |

Technical data - Construction

| | |
|--------------------|----------------------|
| IP Protection | IP67 |
| Material | Steel, nickel-plated |
| Dimensions | 50,8×76,2×20,8 mm |
| cable length | 3 m |
| Mounting force in | Threaded hole M12 |
| Mounting force out | Threaded hole M12 |

Technical data - Measuring system

| | |
|-------------------|--------|
| Full scale output | 2 mV/V |
|-------------------|--------|

Functions

Standard

| | |
|------------------------|------------|
| combined error | 0,02% |
| load cell connection | 4-guide |
| measuring applications | Force;mass |

Technical data - Environmental conditions

| | |
|-------------------------|--------|
| Usage Temperature (min) | -10 °C |
| Usage temperature (max) | 40 °C |

Technical data - Packing & Shipping

| | |
|---|----------------|
| Dimensions packaging (W×D×H) | 185×155×60 mm |
| Gross weight | 0.65 kg |
| Net weight | 0.55 kg |
| Shipping method | Parcel service |
| Packaging component - by weight - cardboard | 97 g |
| Delivery time | 1 d |

Technical data - Verification

| | |
|--|--------|
| Verification approval conforming to 2014/31/EU | Yes |
| Resolution loadcell (e) | 3000 e |

KERN CS 750-3P1

4-wire "S" measuring cell made of nickel-plated steel for force and mass measurement



Option

