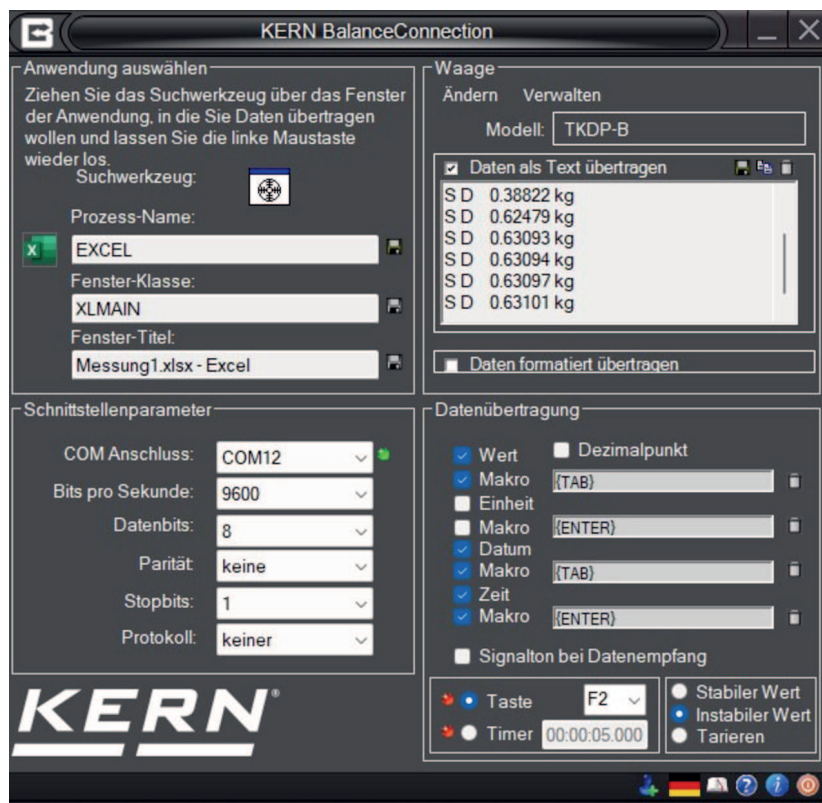


PRODUCT BROCHURE

KERN SCD-4.0-PRO-DL-AS05

Date: 19.04.2025

ENGLISH



Flexible recording or transfer of measurements, particularly to Microsoft® Excel or Access

CONTACT

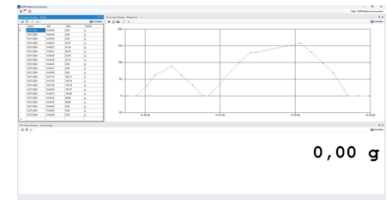
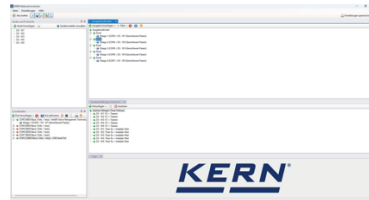
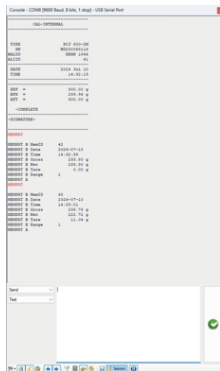
KERN & SOHN GmbH
Ziegelei 1
72336 Balingen
Germany

Phone : +49 7433 9933-0
Fax : +49 7433 9933-149
Email : info@kern-sohn.com
Web : www.kern-sohn.com

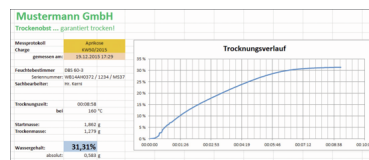


Scan here for more
information

PRODUCT SHOWCASE



	Salz	Datum / Uhrzeit	Differenz	Abweichung	Gesamt
4					
5	200 g	2023-05-07 12:15	0,47 g	0,23%	200,47 g
6	400 g	2023-05-07 12:15	11,21 g	2,80%	411,68 g
7	2000 g	2023-05-07 12:15	2,29 g	-0,11%	2.002,29 g
8	4.999 g	2023-05-07 12:16	-0,007 g	-0,01%	4.998,993 g
9	1.000 g	2023-05-07 12:16	-0,003 g	-0,03%	1.000,007 g
10	0,001 g	2023-05-07 12:17	0,0001 g	10,00%	1.000,008 g



ENGLISH

DESCRIPTION

- For operating systems Windows 10, 11
- .NET Framework 4.8.1 required
- Full administration rights are required for the installation
- Supports balances and measuring devices with USB, RS-232, RS 485, Bluetooth, LAN or WiFi & #160; network (TCP/UDP/IP)
- Highly flexible formatting and design of the output (any order and positioning, formatting and rounding), particularly recording of date and time for every value transferred, if required
- Any number of devices/interfaces can be connected, as well as simultaneous and synchronised recording of several balances
- Key-activated or time-controlled interrogation of measurements or trigger of device functions, also for continuous recording
- The interface protocols for KERN balances are already predefined (standard configuration). Support of other balances is possible through flexible configuration
- Compatible interface cable included when you order a KERN balance at the same time

- Many different transfer and recording options:
 - MicrosoftR Excel/Access/Word in the foreground or background
 - Other Windows applications (through key simulation), e.g. shipping software or ERP system (SAP, Sage, etc.)
 - File recording (e.g. as text or CSV file)
 - Print out on text or label printer
- Additional features of the BalanceConnection PRO version::
 - ODBC/SQL databases such as SQL Server or MySQL
 - Transfer to HTTP Webservices/Web forms
 - Histogram
 - Enables the connection of medical balances to practice EDP systems using the device data transfer protocol (GDT) and also the HL7 protocol
 - Implementation of programs/scrips using freely-definable command lines
 - Command sequences
 - Defining the conditions for specific events and the reaction to these events
 - Filter for stability recognition (configurable value storage)
 - Central configuration repository, e.g. on the network
 - On-screen displays with configurable user interface for flexible balance operation
- Benefits
 - Ideal software where weighing data which has been collected needs to be transferred to a Windows PC
 - Particularly suitable for professional integration of weighing systems into existing networks where there is a high demand for automated data transfer and further processing, for integration of databases
 - Automatic recording, e.g. for long-term tests
 - GLP-compliant lab software
 - For each license, you can use as many balances as you need at one PC/workstation
 - Can be used across different branches and applications
- Scope of supplies: Download link for 5 licenses

SPECIFICATIONS

Article codes, product groups & Status information

Model article-code	SCD-4.0-PRO-DL-AS05
Model-Serie	SCD
Assortment	KERN
Product Type	Software
Product group	BalanceConnection

Product usage type	Main item;Accessories/Services
EAN code (Model)	4045761488724
Predecessor Model	SCD-4.0; SCD-4.0-PROS05; SCD-4.0S05
Customs tariff number	85234910

Technical data - Packing & Shipping

Delivery time	1 d
---------------	-----