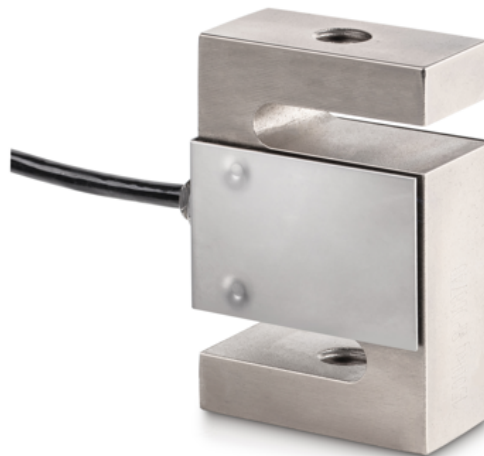


KERN CS 15000-3P1

4-wire "S" measuring cell made of nickel-plated steel for force and mass measurement



Article codes, product groups & Status information

Model article-code	CS 15000-3P1
Model-Serie	CS P1
Assortment	Sauter
Product Type	Measuring cells
Product group	S-shape load cells
Product usage type	Main item;Accessories/Services
EAN code (Model)	4045761221451
Planned start date	2019-1HJ
Customs tariff number	90249000

Technical data - Primary

Force directions	Compression;tension
OIML class	C3
Weighing capacity	15000 kg
Max (N)	150 kN

Technical data - Construction

IP Protection	IP67
Material	Steel, nickel-plated
Dimensions	160×200×60 mm
cable length	6 m
Mounting force in	Threaded hole M42 × 3
Mounting force out	Threaded hole M42 × 3

Technical data - Power supply

Excitation Voltage min.	5 V
-------------------------	-----

Excitation Voltage max.	12 V
-------------------------	------

Technical data - Measuring system

Full scale output	2 mV/V
combined error	0,02%
load cell connection	4-guide
measuring applications	Force;mass

Technical data - Environmental conditions

Usage Temperature (min)	-10 °C
Usage temperature (max)	40 °C

Technical data - Packing & Shipping

Dimensions packaging (W×D×H)	320×320×160 mm
Gross weight	14 kg
Net weight	12 kg
Shipping method	Parcel service
Packaging component - by weight - cardboard	1.4 kg
Delivery time	4 d

Technical data - Verification

Verification approval conforming to 2014/31/EU	Yes
Resolution loadcell (e)	3000 e

Functions

Standard

KERN CS 15000-3P1

4-wire "S" measuring cell made of nickel-plated steel for force and mass measurement

