

PRODUCT BROCHURE

KERN SCD-4.0-DLS05

Date: 19.04.2025

ENGLISH



Flexible recording or transfer of measurements, particularly to Microsoft® Excel or Access

CONTACT

KERN & SOHN GmbH
Ziegelei 1
72336 Balingen
Germany

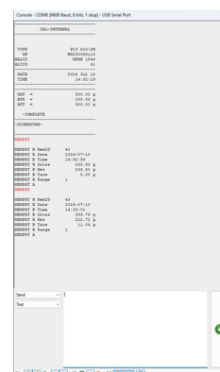
Phone : +49 7433 9933-0
Fax : +49 7433 9933-149
Email : info@kern-sohn.com
Web : www.kern-sohn.com



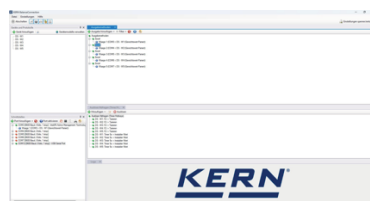
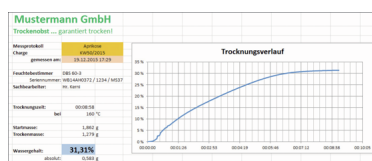
Scan here for more
information

The screenshot displays a software application with a table and a graph. The table, titled 'Table 1', contains data for 'Date', 'Time', 'Temperature', 'Humidity', and 'Pressure'. The graph, titled 'Graph 1', plots 'Temperature' against 'Time' from 0.00 to 1.00. The temperature starts at 0.00, rises to a peak of approximately 0.15 at 0.25, drops to 0.00 at 0.50, rises to a peak of approximately 0.25 at 0.75, and then drops to 0.00 at 1.00.

Date	Time	Temperature	Humidity	Pressure
2023-10-27	0.00	0.00	0.00	0.00
2023-10-27	0.05	0.05	0.05	0.05
2023-10-27	0.10	0.10	0.10	0.10
2023-10-27	0.15	0.15	0.15	0.15
2023-10-27	0.20	0.15	0.15	0.15
2023-10-27	0.25	0.15	0.15	0.15
2023-10-27	0.30	0.10	0.10	0.10
2023-10-27	0.35	0.05	0.05	0.05
2023-10-27	0.40	0.00	0.00	0.00
2023-10-27	0.45	0.00	0.00	0.00
2023-10-27	0.50	0.00	0.00	0.00
2023-10-27	0.55	0.05	0.05	0.05
2023-10-27	0.60	0.10	0.10	0.10
2023-10-27	0.65	0.15	0.15	0.15
2023-10-27	0.70	0.20	0.20	0.20
2023-10-27	0.75	0.25	0.25	0.25
2023-10-27	0.80	0.20	0.20	0.20
2023-10-27	0.85	0.15	0.15	0.15
2023-10-27	0.90	0.10	0.10	0.10
2023-10-27	0.95	0.05	0.05	0.05
2023-10-27	1.00	0.00	0.00	0.00

[illegible]

ENGLISH



- Many different transfer and recording options:
 - Microsoft Excel/Access/Word in the foreground or background
 - Other Windows applications (through key simulation), e.g. shipping software or ERP system (SAP, Sage, etc.)
 - File recording (e.g. as text or CSV file)
 - Print out on text or label printer
- Screen output such as large display, line chart (drying curve for moisture analyzer), histogram, etc.
- : Benefits
 - Typing errors during manual transfer, for example, are avoided
 - Automatic recording, e.g. for long-term tests
 - GLP-compliant lab software
 - Can be used across different branches and applications
- Scope of supplies: Download link for 5 licenses

SPECIFICATIONS

Article codes, product groups & Status information

Model article-code	SCD-4.0-DLS05
Model-Serie	SCD
Assortment	KERN
Product Type	Software
Product group	BalanceConnection
Product usage type	Main item;Accessories/Services
EAN code (Model)	404576 1488700
Predecessor Model	SCD-4.0S05
Customs tariff number	852349 10

Technical data - Packing & Shipping

Delivery time	1 d
---------------	-----

SERVICES

Model	Description
970-105	Warranty extension KERN (+2 years) 970-105