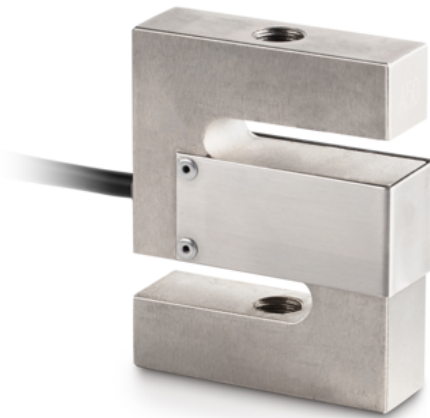


KERN CS 500-3Q1

6-wire "S" measuring cell made of nickel-plated steel for force and mass measurement

KERN[®]



Article codes, product groups & Status information

Model article-code	CS 500-3Q1
Model-Serie	CS Q1
Assortment	Sauter
Product Type	Measuring cells
Product group	S-shape load cells
Product usage type	Main item;Accessories/Services
EAN code (Model)	4045761222069
Planned start date	2019-1HJ
Customs tariff number	90249000

Technical data - Primary

Force directions	Compression;tension
OIML class	C3
Weighing capacity	500 kg
Max (N)	5 kN

Technical data - Construction

IP Protection	IP67
Material	Steel, nickel-plated
Dimensions	80×62,1×19 mm
cable length	5 m
Mounting force in	Threaded hole M12
Mounting force out	Threaded hole M12

Technical data - Power supply

Excitation Voltage min.	10 V
-------------------------	------

Functions

Standard

Excitation Voltage max.	15 V
-------------------------	------

Technical data - Measuring system

Full scale output	2 mV/V
combined error	0,017%
load cell connection	6-Leiter
measuring applications	Force;mass

Technical data - Packing & Shipping

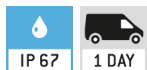
Dimensions packaging (W×D×H)	250×155×60 mm
Gross weight	0.95 kg
Net weight	0.80 kg
Shipping method	Parcel service
Packaging component - by weight - cardboard	242 g
Packaging component - by weight - plastics	5 g
Delivery time	1 d

Technical data - Verification

Verification approval conforming to 2014/31/EU	Yes
Resolution loadcell (e)	3000 e

KERN CS 500-3Q1

6-wire "S" measuring cell made of nickel-plated steel for force and mass measurement



Option

