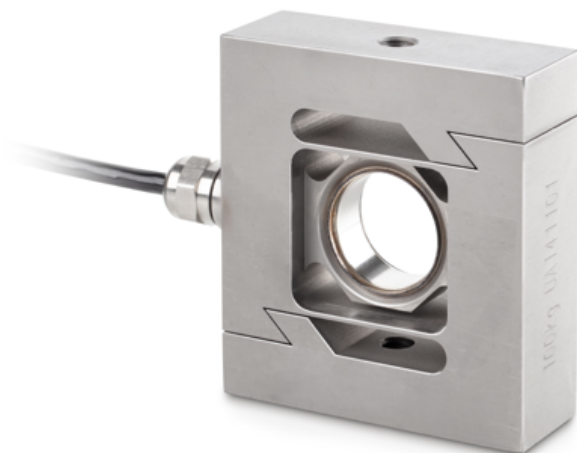


KERN CS 50-3P2

"S"-Load/force measuring cell made from stainless steel



Article codes, product groups & Status information

Model article-code	CS 50-3P2
Model-Serie	CS P2
Assortment	Sauter
Product Type	Measuring cells
Product group	S-shape load cells
Product usage type	Main item;Accessories/Services
EAN code (Model)	4045761232556
Planned start date	2020-1HJ
Customs tariff number	90249000
Discontinued model	Yes

Technical data - Primary

Force directions	Compression;tension
OIML class	C3
Weighing capacity	50 kg
Max (N)	500 N

Technical data - Construction

IP Protection	IP68
Material	Stainless steel
Dimensions	92×86×50 mm
cable length	6 m
Mounting force in	Threaded hole M8
Mounting force out	Threaded hole M8

Technical data - Measuring system

Functions

Standard

Full scale output	2 mV/V
combined error	0,023%
load cell connection	4-guide
measuring applications	Force;mass

Technical data - Environmental conditions

Usage Temperature (min)	-10 °C
Usage temperature (max)	40 °C

Technical data - Packing & Shipping

Dimensions packaging (W×D×H)	205×170×60 mm
Gross weight	1.6 kg
Net weight	1.4 kg
Shipping method	Parcel service
Packaging component - by weight - cardboard	109 g
Delivery time	1 d

Technical data - Verification

Verification approval conforming to 2014/31/EU	Yes
Resolution loadcell (e)	3000 e

KERN CS 50-3P2

"S"-Load/force measuring cell made from stainless steel



IP 68



1 DAY

Option



+3 DAYS



+4 DAYS